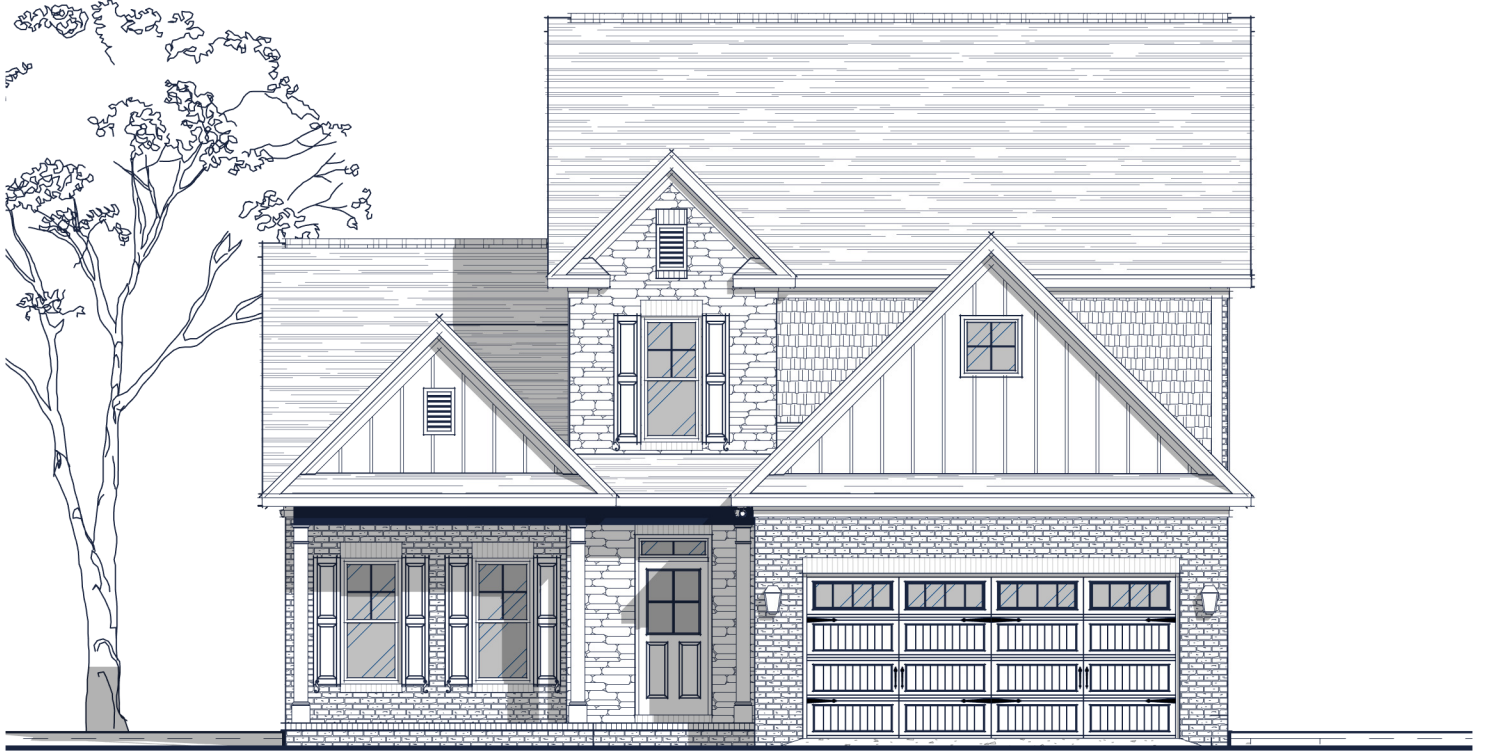




FLOOR PLAN: PRESTON TRANSITIONAL



Specs:

Bedrooms:	4
Bathrooms:	3.5
Square Footage:	2,695 Sq.Ft.
First Level:	1,580 Sq. Ft.
Second Level:	1,115 Sq. Ft.
Width:	40' - 10"
Depth:	56' - 0"

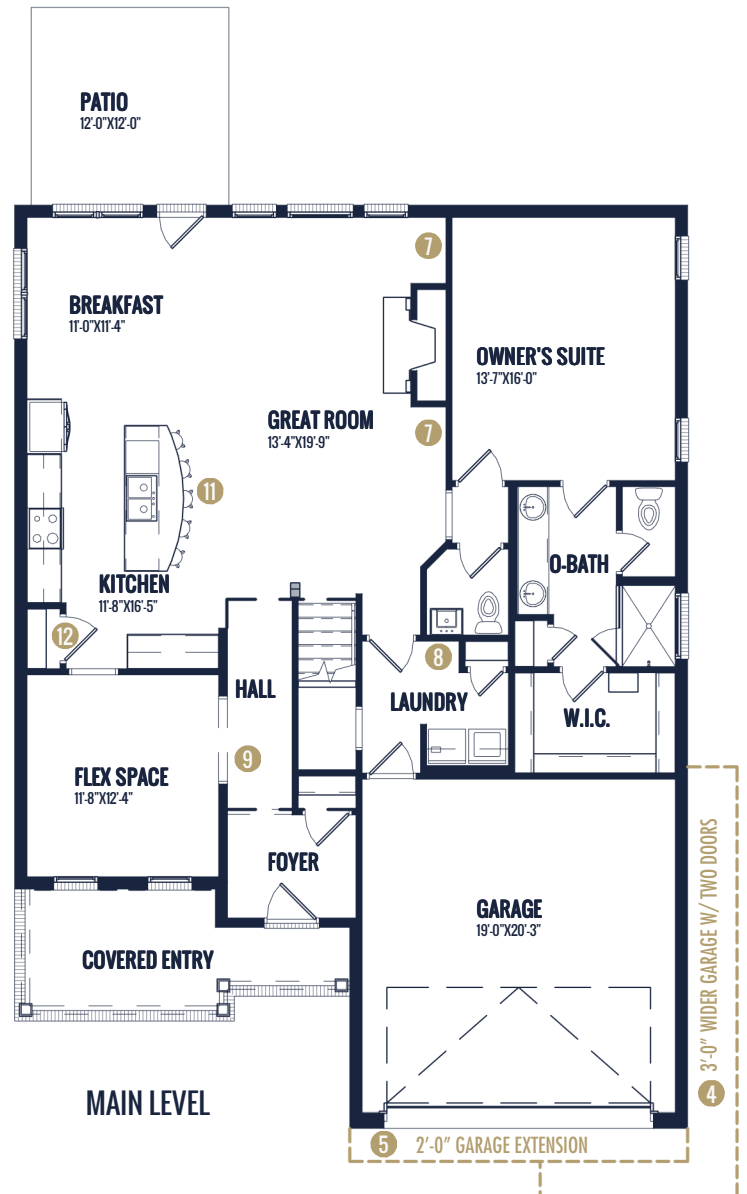
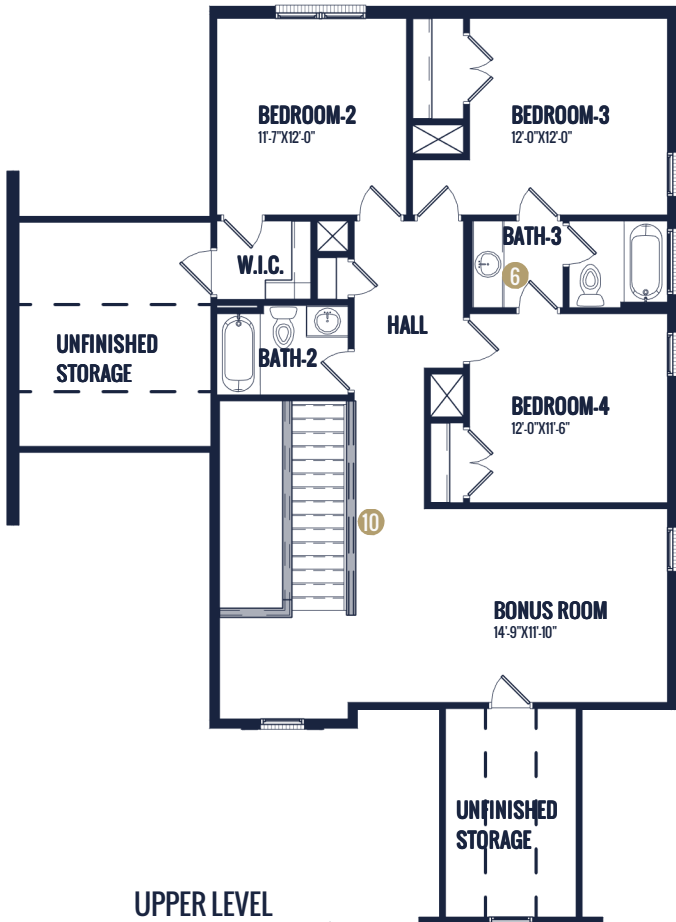
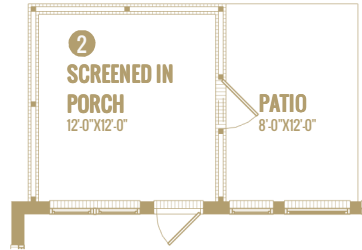
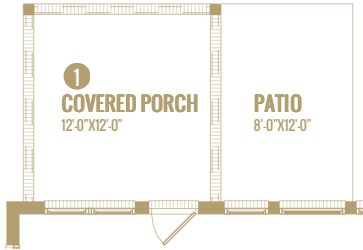
Options Shown:

- 1 Covered Porch
- 2 Screened in Porch
- 3 Sunroom (Adds 144 Sq.Ft.)
- 4 3'-0" Wider Garage w/ Two Doors
- 5 2'-0" Garage Extension
- 6 Double Sink Bath-3
- 7 Built-ins
- 8 Drop Zone
- 9 French Doors at Flex space
- 10 Open Rails at Stairs
- 11 Additional Cabinets at Island
- 12 Enlarged Corner Kitchen Pantry
- 13 Enlarged Curved Patio w/ Fire Pit

Watercolors, illustrations, and floor plans are for marketing purposes only and are subject to change at builder's discretion. Square footage is outside veneer and should be independently verified. This is not a legal document. 9/6/2022 3:49:15 PM



FLOOR PLAN: PRESTON TRANSITIONAL



Watercolors, illustrations, and floor plans are for marketing purposes only and are subject to change at builder's discretion. Square footage is outside veneer and should be independently verified. This is not a legal document.
9/6/2022 3:49:17 PM

FLOOR PLAN: PRESTON TRANSITIONAL



DOUBLE SINK



BUILT-INS



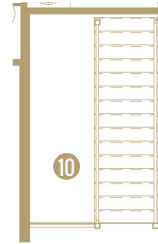
DROP ZONE



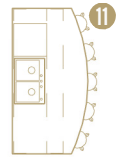
FRENCH DOORS



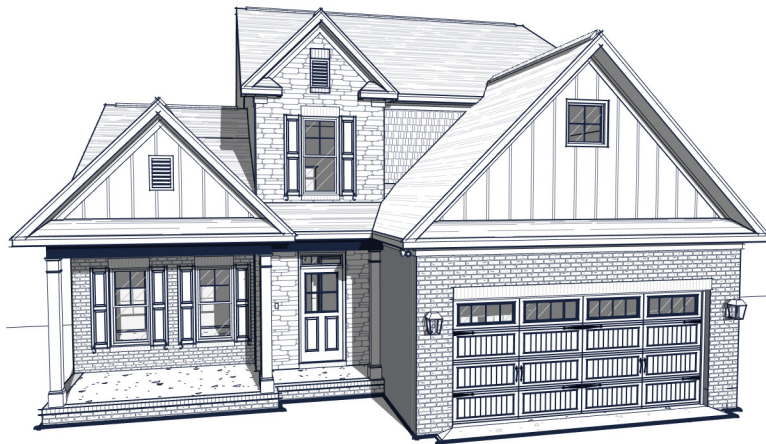
OPEN-RAILS



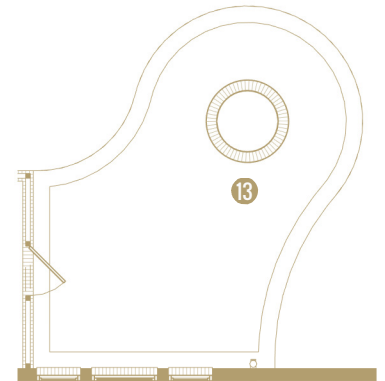
OPEN-RAILS



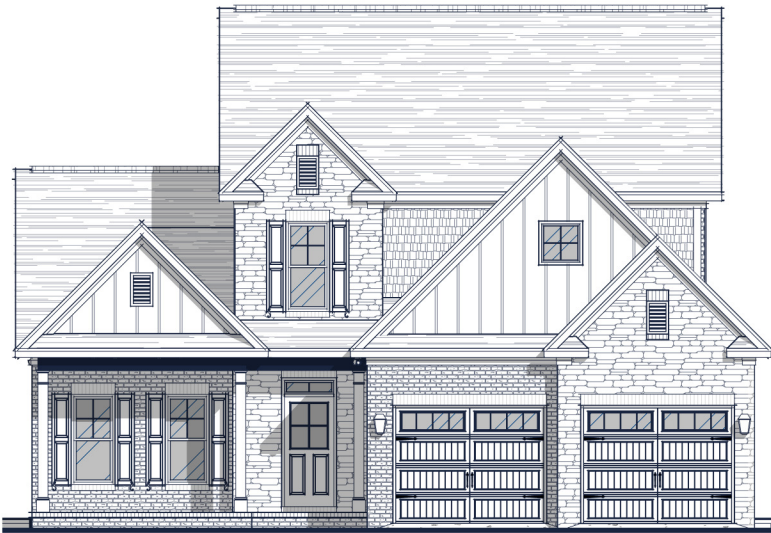
CABINETS AT ISLAND



CORNER PANTRY



CURVED PATIO WITH FIRE PIT



4 3'-0" WIDER GARAGE W/ TWO DOORS

Watercolors, illustrations, and floor plans are for marketing purposes only and are subject to change at builder's discretion. Square footage is outside veneer and should be independently verified. This is not a legal document.
9/6/2022 3:49:23 PM